

Blinder Update Software

Blinder Update Software has 2 purposes:

Software Updates – Page 2

Used for updating the BLINDER CPU (CPU firmware) with new versions.

CPU Settings – Page 3

Used for adjusting of the CPU settings such as jamming time, start up sound and more.

Go to www.blinder.dk and download and install the newest version of Blinder Update Software (if not installed already). In any cases it will be a good idea to check for latest product information and help files at www.blinder.dk

For installing the Blinder Update for the first time please also see the [PC Update Installation help file.PDF](#)

Blinder Update Screen

The screenshot shows the BlinderUpdate application window. It is divided into several sections: 'Connection' (Status: CPU connected, Region code: 2, Software version: 2), 'Version' (a list of versions with '2.4 USA' selected), 'Information' (CPU: 2.4.USA 20090904, Region code: 2, Software Version: 4, SLAVE: M-27/47; ID1720), and 'Parksensor' (checkboxes for Port 1-4, Startup sound, Jamming time: 7 Sec, Alarm time after jamming: 3). Buttons for 'Update CPU firmware', 'Save CPU settings', and 'Read CPU settings' are visible.

Status for the USB connection to the CPU

Version Window
Select Firmware version here

Click here to update the CPU firmware

Adjust the CPU Settings here

Click here for saving the new settings to the CPU

Click here to read the present settings from the CPU

This close-up view highlights the 'Version' and 'Information' sections. The 'Version' list shows '2.4 USA' selected. The 'Information' section displays details for the selected version.

CPU Region Code
Is locked and cannot be changed.
Code 1 for INT (International)
Code 2 for USA

CPU Software version
The current CPU software version.

Information Window
Informs details for the software selected in the versions Window.
Slave is the Transponder Hardware version ID number.

Software Updates

How to update your Blinder CPU Firmware to new versions

1

Check on www.blinder.dk if you have the latest version of the Blinder Update Software installed at your PC. If not, download the new version before proceeding.

2

You can either update your Blinder CPU while it is mounted on the vehicle or you can disconnect and remove it if that is most appropriate. In cases where you do NOT disconnect the Blinder CPU make sure the power is turned off before proceeding – The switch shall be in the middle position (0).

3

Start the Blinder Update Software

Connect the Blinder CPU to your PC by the USB plug. After a few moments Blinder Update will find the Blinder CPU and indicate this in the top left corner (Status: CPU connected)

Select the wanted firmware version in the Version Window

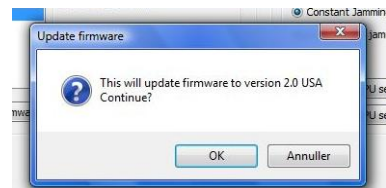
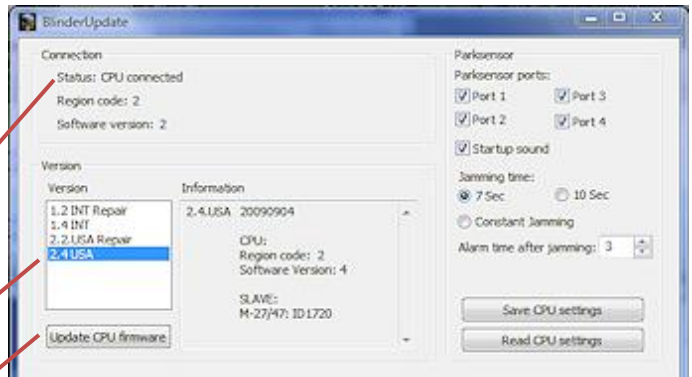
Press button “Update CPU firmware”

Click “OK” to confirm “update firmware” in next window.

Please wait while the CPU firmware is updated. It may take a few minutes.

Click “OK” in next window “Firmware successfully updated”.

Now the CPU has been updated with the new firmware, and next step is to update the Blinder transponders on the vehicle.



4**Update the Blinder transponders on the vehicle**

Disconnect the USB plug from the Blinder CPU

If disconnected, re-connect the transponders, power supply and alert plug to the CPU.

Turn the switch to position II. Now the CPU will automatically start the updating process of all connected transponders, one transponder at a time during which period the system is flashing (GREEN) and beeping quickly. It takes approximately 5-10 seconds for each transponder connected to the system with a short break between.

When all connected transponders have been updated successfully the system will send out a red flash / beep 2 times.

Done!

Adjust the CPU Settings

You can adjust the settings listed below:

Parking sensor Ports

Select which of the ports (1-4) on the CPU that you want to have the parking sensor function.

Startup Sound

Whether you want the system to send out a startup sound or not.

Jamming Time

You can select how long time the system will send out jamming pulses after laser detection. Choose between 7 or 10 seconds or constant jamming (As long as the vehicle is hit by the IR Light from a speed laser).

Save CPU Settings

When finish press the "Save CPU Settings" button.

Done!

